

Quick

▶▶▶▶▶ **installation guide**

**1-Port USB
10/100M Internet Print Server**

HPS1U



Website: www.hawkingtech.com
E-Mail: techsupport@hawkingtech.com
Copyright © 2003 Hawking Technologies, Inc. All rights reserved.

Step 1

Check the requirements for installation

Congratulations on purchasing Hawking's HPS1U 1-Port USB 10/100M Internet Print Server. The Hawking HPS1U is a powerful and convenient network printing solution that will connect your USB printer to a network. The HPS1U has a 10/100Mbps auto-sensing port, allowing you to attach it to a 10Base-T or 100Base-TX network without the need for a dedicated PC print server. The HPS1U also supports multiple servers and multiple protocols, providing you with the capability to print from anywhere, from any computer and from any application.

Please take the time now to check the contents of your package:

Package Contents



HPS1U Print Server



One CD-ROM



Quick Installation Guide



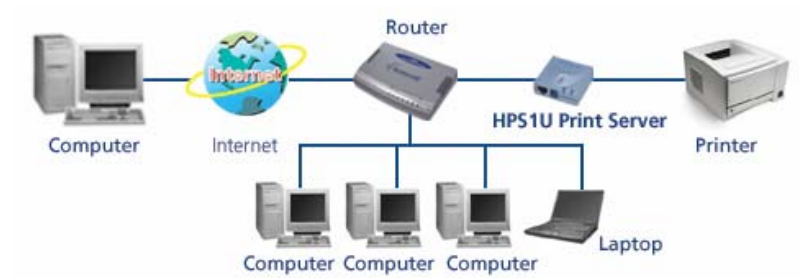
One power adapter

(Manual and Drivers)

What you will need to get started

- One USB Printer
- One USB Cable
- One Ethernet cable attached to your main network
- A computer client attached to your network

Planning Your Print Server Network



LED Indicators



The HPS1U is equipped with two LED lights to assist in diagnosing print server or network errors.

Status (Green)

When the print server unit is powered on, the *Status* LED will flash as part of the unit's **Power On Self Test (POST)**. This indicates that the print server hardware is properly configured. The HPS1U may take up to 1 minute to perform its internal diagnostic tests.

10/100M (Orange)

This light will illuminate and flash when the HPS1U detects data transmissions over the network.



Step 2

Connect Your Print Server

Hardware Installation

1. Connect the HPS1U Print Server to a network.
2. Connect the HPS1U Print Server to your printer.
3. Plug the AC power adapter into the power slot on the side of the Print Server.

Check the LED's marked as **status** on the side of the Print Server. It should start to flash while doing a routine diagnostic test and printer check. If not, please contact your local dealer for repair or replacement.

NOTE: You must use the power adapter shipped along with the print server. Do NOT use any other power adapter from other sources.



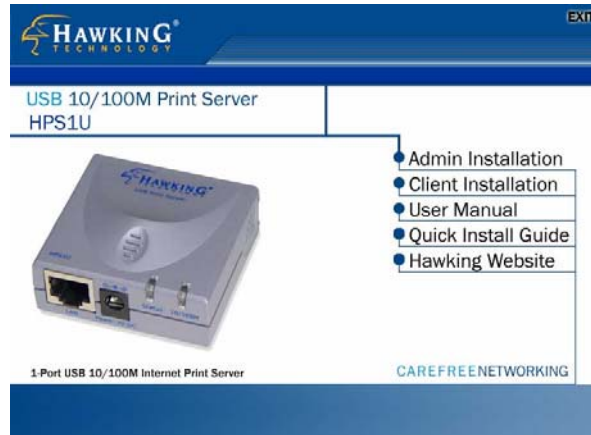
Step 3

Install your PC Software

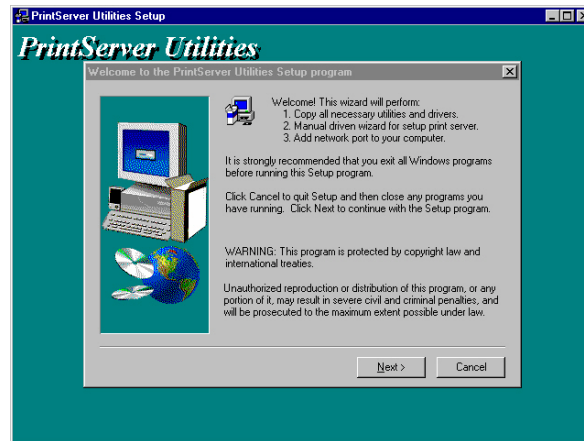
WINDOWS 95/98/ME/NT/2000/XP

- 1) **POWER ON:** After you have correctly connected your print server to your PC and router, please power on all units.
- 2) Before the installation, please verify that your network protocols are installed on your PC (TCP/IP, IPX and/or NetBEUI). If they are not installed, please consult your operating system's manual for instructions on how to do so.
- 3) **INSTALL the Administrator Installation Program:** To install your Print Server administration software, please follow the directions listed below.
 1. Insert the **Windows 95/98/ME/NT/2000/XP** Setup CD into your CD-ROM.
(Windows should execute the **Autorun.exe** program automatically. If not, run **Autorun.exe** manually from your CD-ROM drive's root directory.)

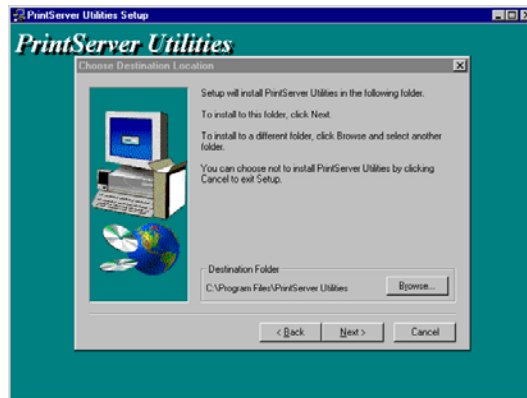
2. The Hawking Installation Windows manager will pop up on your screen as follows:



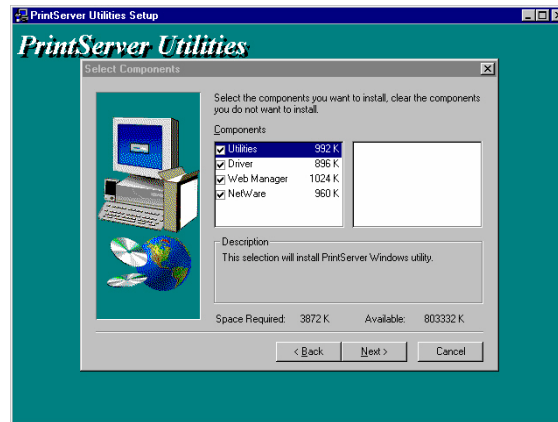
3. Click on "Admin Installation" and the "Utilities Setup" window will be displayed.



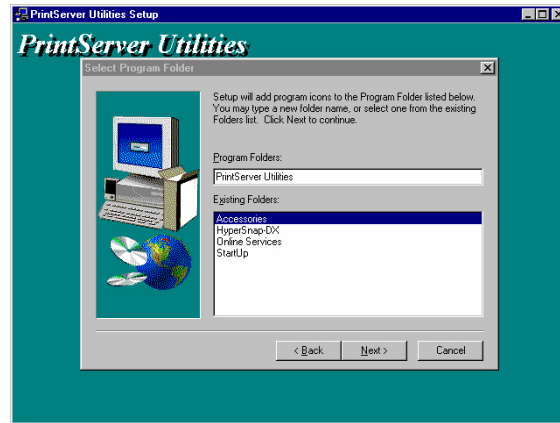
4. Click “Next,” and specify the destination folder where the *HPSIU* utility files will be installed.



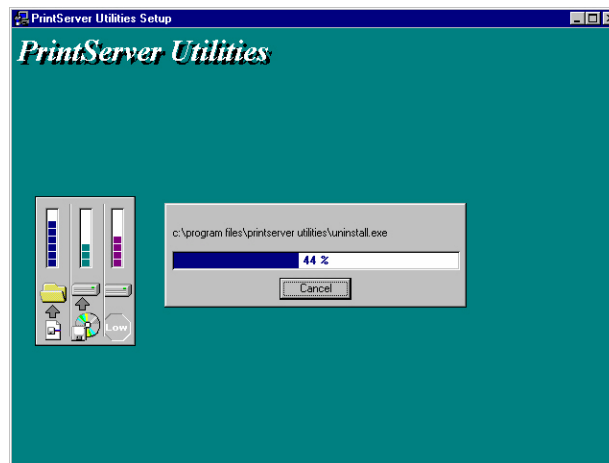
5. Click “Next,” and select the components you want to install. **It is highly recommended to install all provided components.**



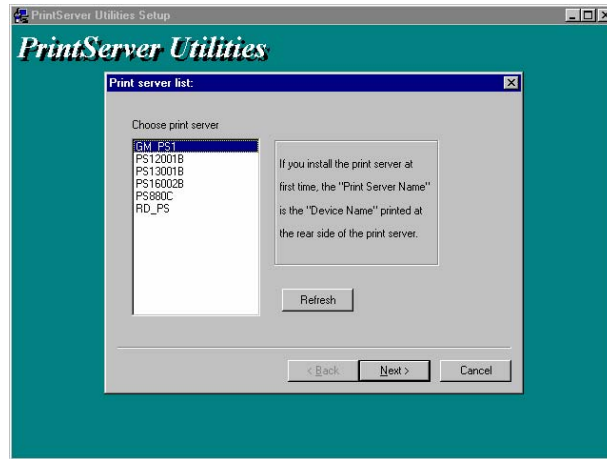
6. Click “Next,” and specify the program folder where the program icons will be added.



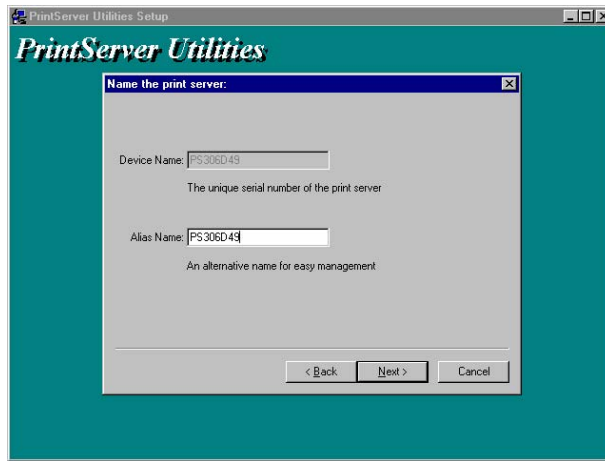
7. Click “Next” to start the utility file installation.



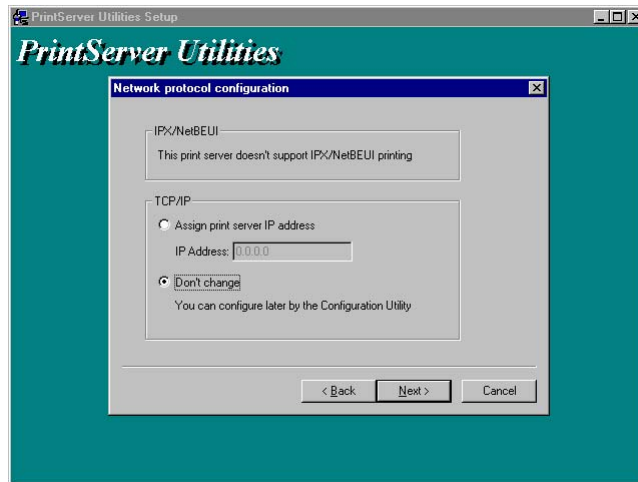
8. The “Print Server Utilities” program will finish installing. **After this installation is complete, the next step will involve configuring your HPS1U.** Click “*Next*,” and the “*Choose Print Server*” dialog box will be displayed as follows.



9. Click “*Next*” and a dialog box will prompt you to name your print server. (Please make sure to write down the name you assign to your print server for future use.)



10. Click "Next" to configure your print server's network communication protocol.

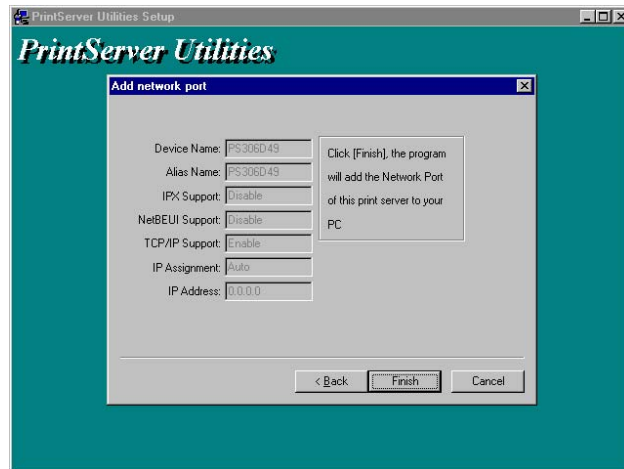


As a system default setting, IPX and NetBEUI protocols are

enabled and do not need to be configured.

With the TCP/IP protocol, you can either (1) assign a dedicated IP address for your print server or (2) configure it later through the configuration utility software. **(If you choose “Do not change IP – configure later,” there is no effect on your network settings. It is suitable for both Non-IP and IP-enabled networks).**

11. Click “Next” and the configuration summary will be displayed in the setup window. You have completed the “Print Server Setup” process and are ready to set up your print server to work with your printer. Please click “Next” and your system will add the HPS1U’s network port to your PC.



12. The “Installation complete” window will be displayed to indicate that the Administrator Installation procedure is completed.



(Please restart your computer for your setup to complete its installation.)

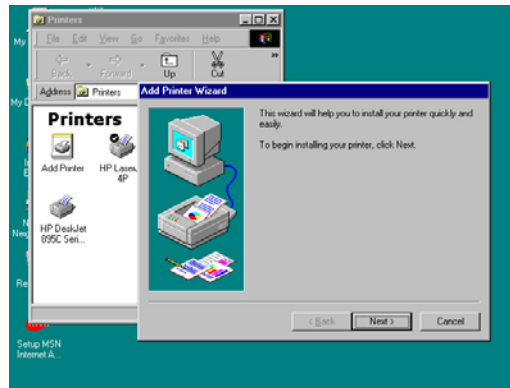
Now that you have completed the administrator’s setup, you can perform the “Client Installation” procedure on all client computers in your network.

To set up printing from this administrator’s PC to the print server, please follow the standard “Add Printer” procedure as described in the steps below. Please choose your appropriate operating system and follow the directions to add your printer through your OS.

WINDOWS 98/NT/ME/2000

Step1. Click the *Start* button, choose *Setting* →
Printers

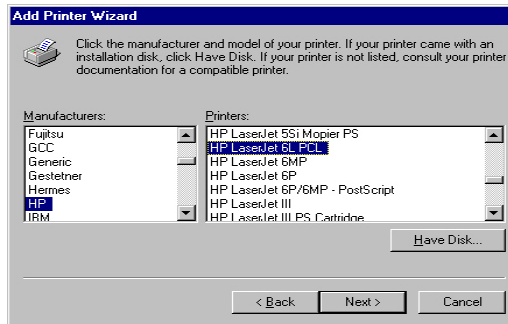
Step2. Double click on *Add Printer*



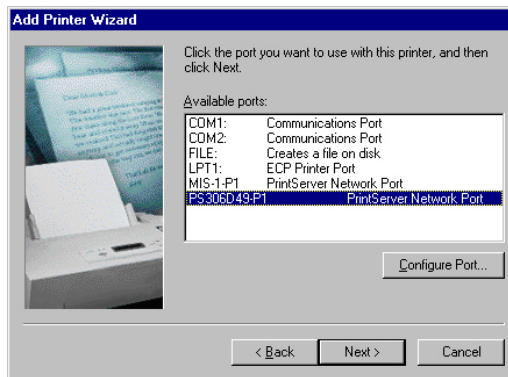
Step3. Select *Local printer* → click
Next.



Step4. Select your printer manufacturer and model, and then click *Next*.



Step5. Choose the *Print Server's Network Port*, which was created by the administrator or client installation process, and click *Next*.



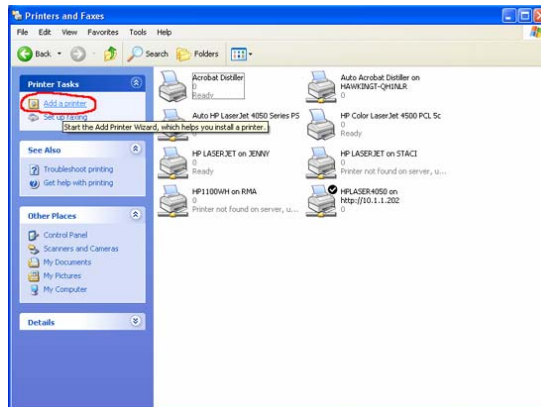
Step6. Complete the rest of the questions to finish the network printer setup.

WINDOWS XP Setup

Step1. Click the *Start* button; choose **Control Panel**

→ *Printers and Faxes*

Step2. Click on *Add a Printer*

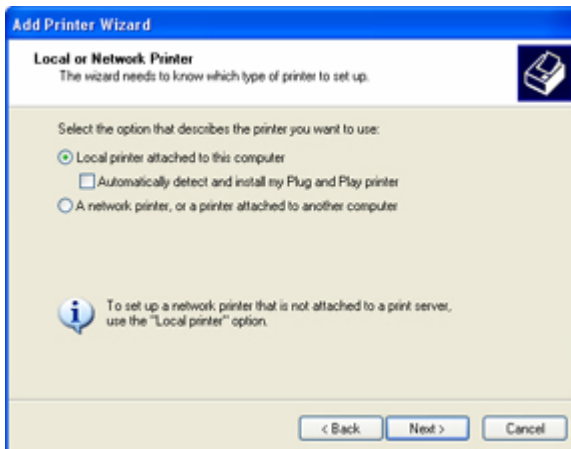


Step3. The *Add Printer* Wizard will appear → Press

Next.

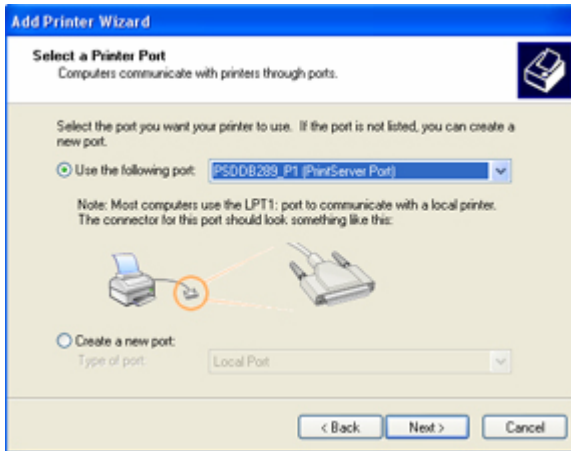


Step4. Select “**Local printer attached to this computer**” → Press *Next*.

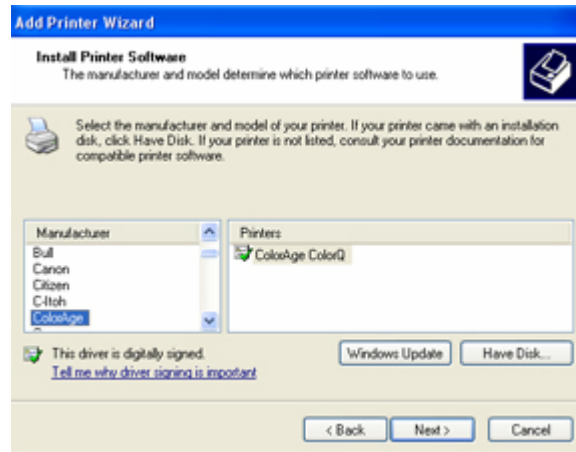


Step5. In the “**Select a Printer Port**” window select “**Use the following port**” and drag the selection bar

down to your newly created print server entry → Press *Next*.



Step6. Select a suitable printer manufacturer and model, and then click *Next*.

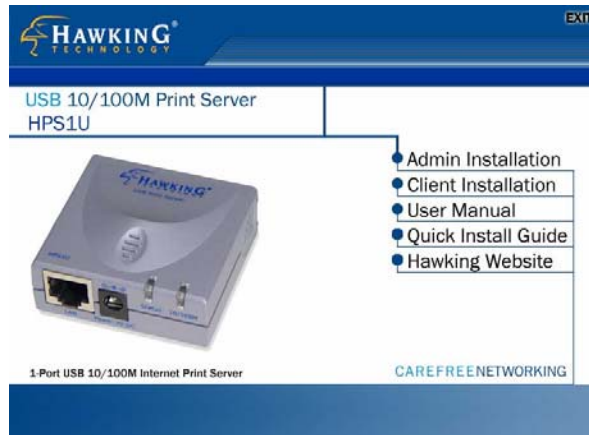


Step7. Please continue through the next couple of

installation steps by pressing *Next* until your new printer is added to your computer. Press the finish button to finalize your configuration.

Client Installation

1. Insert the CD shipped along with the HPS1U into your CD-ROM drive. The Autorun.exe program will execute automatically. If it does not start automatically, run Autorun.exe manually from your CD-ROM drive's root directory.
2. The "*Installation Manager*" will be displayed on the screen as follows.



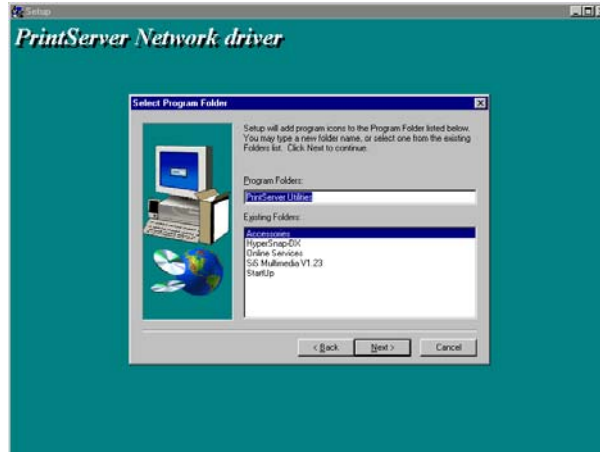
3. Click "*Client Installation*" and the "*Utilities Setup*" window will be displayed.



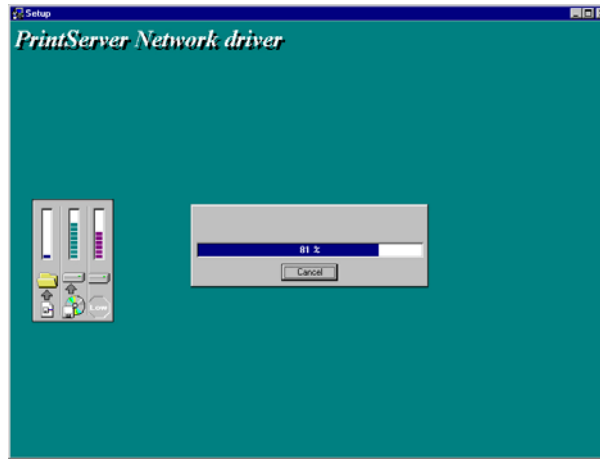
4. Click "Next" and specify the destination folder where the utilities will be installed.



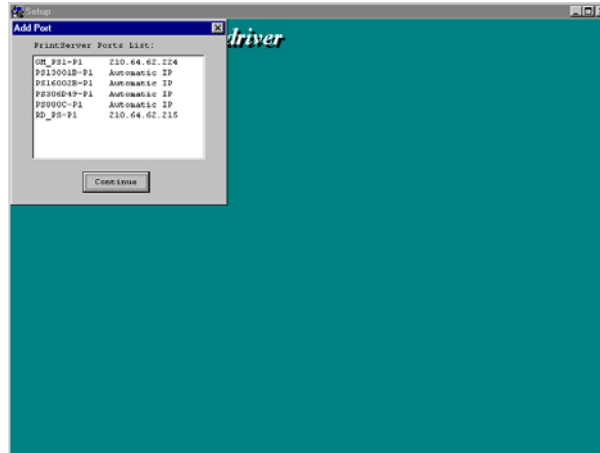
5. Click “*Next*” and specify the program folder where the program icons will be added.



6. Click “*Next*” to start the installation.



7. You have completed the software installation process. Click “*Continue*” and the HPSIU’s network port will be detected on the network and will be added to your PC.



8. The “Installation complete” window will be displayed to indicate that the Client Installation procedure is finished.



You must then perform the Windows standard “**Add Printer**” procedure, as described below, to add a network printer to your PC.

Step1. Click the *Start* button, choose *Setting* → *Printers*

Step2. Double click the *Add New Printer* → select *Local printer* → click *Next*.

Step3. Select a suitable printer manufacturer and

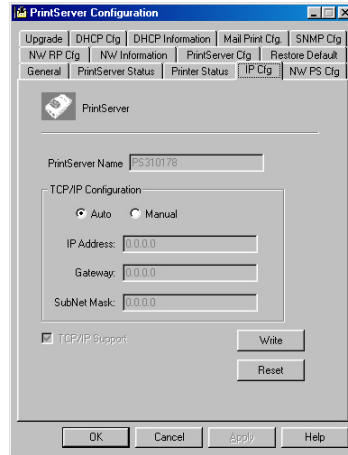
model, and then click *Next*.

Step4. Choose the *HPSIU's Network Port* that was created in the client installation process and click *Next*.

Step5. Complete the rest of the questions by hitting *Next* to finish the network printer setup.

IP Configuration

If you wish to configure your IP address at any time, you may access the HPS1U's print server controls through any Windows environment by using the provided network utilities.



The *IP Cfg* tab of the installed print server utility program brings up the IP configuration page that will allow you to configure the IP address of your print server. The HPS1U will obtain its IP address automatically if you select the *Auto* button under *TCP/IP Configuration*. To manually issue your network's IP address, gateway, and subnet information, select *Manual* and type in your network's IP settings.

Click the *Write* button to save the configuration to the print server and Click the *Reset* button to reset the print server and have the changes take effect.

IPP Printing

The IPP (Internet Printing Protocol) provides you with a convenient method for remote printing jobs via the TCP/IP protocol. The HPS1U USB Print Server can support IPP printing capabilities. It is not necessary to modify any of the print server's internal settings to use the IPP printing features. Windows 2000 and Windows XP computers can use IPP printing functions through the operating system's internal IPP functionality. IPP printing will let you share your network printer with any PC that can access the HPS1U print server by IP. You can even share your printer with users over the Internet who know your printer model, printer port, and IP address of your HPS1U.

IPP Setup

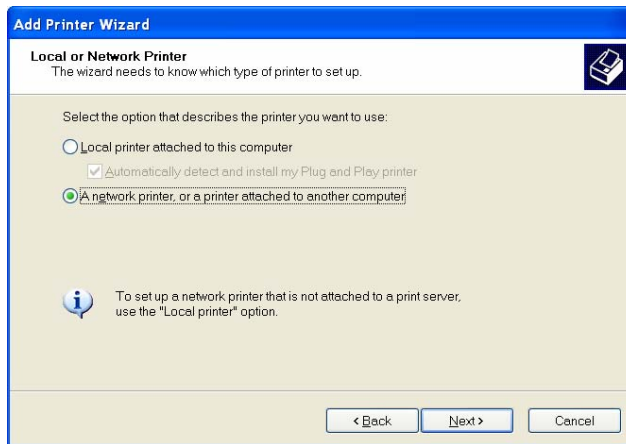
Print Server Side

It is not necessary to modify your IPP settings on the print server side. Make sure you know your print server's IPP settings and make sure they are correctly set to your network's IP settings. Contact your system administrator if you are unfamiliar with your network's routed IP settings. If you would like to share your printer with Internet

users outside of your internal network structure, you will have to set an outside IP address that can access the print server. You also have to make sure that any gateway, router or firewall does not block the IPP protocol if you have those devices installed. Please contact your system administrator or consult your router's manual for DMZ or port mapping configuration settings.

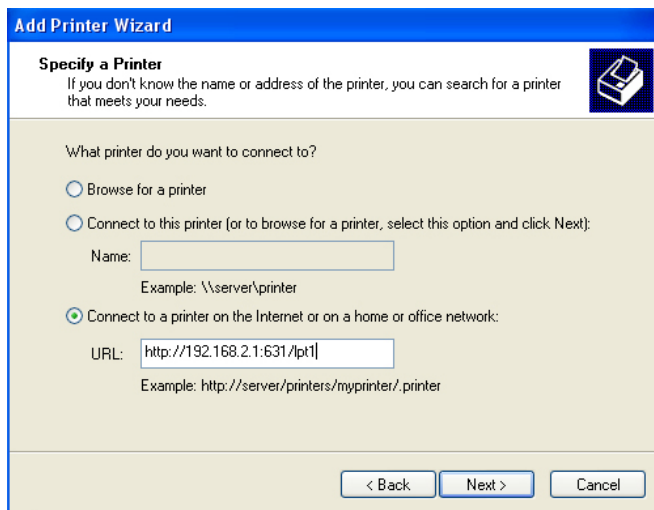
Client Side

You will need to perform Window's standard *Add New Printer* procedure. To do this, select the "*Network Printer*" setting as shown in the screen below and click "Next."



Select "*Connect to a printer on the Internet or on a home or office network*" and enter the URL of your HPS1U print server. The URL format will be "`http://IP:631/LPT_PORT`". The **IP** portion of the URL will be the print server's IP address. You will need to write

down **631** after the IP address. 631 is the IPP standard port number for IPP printing requests. **LPT_PORT** is the port name of your print server that your printer is connected to. For one port print servers, the port name will be “**lpt1**”. For Hawking’s three-port print server, the port names are – **lpt1, lpt2 or lpt3** depending on which printer port your printers are connected to. (Please write down the printer port and corresponding printer model for configuring our line of multiple port print servers.) An example IP address will be modeled as follows: The URL will be `http://192.168.12.13:631/lpt1` for a print server located on the first printer port (lpt1) of the IP address 192.168.12.13. After entering the URL of print server, click “Next ” and complete the remaining configuration settings to access the shared network printer.



For advanced configuration options, please refer to your HPS1U manual which is located on the HPS1U Installation CD-ROM.

Ethernet

A networking standard using cables (Category 5) to create a network.

IPP

Internet Printing Protocol. IPP allows you to print your documents over an Internet connection to another printer over the net.

Network Adapter

Also known as a NIC (Network Interface Card). Used to provide PC's or laptops with an Ethernet port or wireless access to the network.

Broadband Modem

A device that allows broadband connection to the internet. Broadband connections include speeds faster than 56k (dial up modem speed). The two most common types of Broadband connections are DSL and Cable. Cable modems rely on the bandwidth of cable television lines, while DSL modems rely on the telephone lines operating at DSL speeds.

Router

A device used to share Internet access from one user to multiple users.