

D-Link[®] Quick Installation Guide

This product works with the following operating system software: **Windows XP, Windows 2000, Windows Me, Windows 98SE**

DWL-G630
AirPlus™ G 802.11g/2.4GHz
Wireless Cardbus Adapter



Before You Begin

You must have at least the following:

- A laptop computer with an available 32-bit Cardbus slot
- At least a 300 MHz processor and 32MB of memory
- Cardbus Controller properly installed and working in the laptop computer
- An 802.11g or 802.11b Access Point (for Infrastructure Mode) or another 802.11g or 802.11b wireless adapter (for Ad-Hoc; Peer-to-Peer networking mode.)

Check Your Package Contents

These are the items included with your DWL-G630 purchase:



DWL-G630 AirPlus™ G 802.11g/2.4GHz Wireless Cardbus Adapter



CD-ROM (containing Drivers, Manual and Warranty)

If any of the above items are missing, please contact your reseller.

1 Installing the Drivers

Turn on the computer and **Insert** the **D-Link AirPlus™ G DWL-G630 Driver CD** in the CD-ROM drive.

The step-by-step instructions that follow are shown in **Windows XP**. The steps and screens are similar for the other Windows operating systems.

 **Do NOT install the DWL-G630 Cardbus Adapter into your computer before installing the driver software from the D-Link CD!**

1

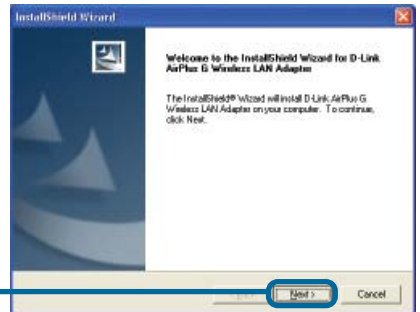
Installing the Drivers (continued)

Click **Install Drivers**

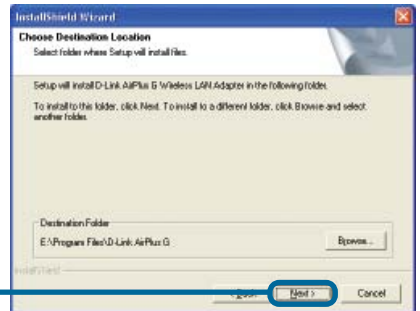
If the CD Autorun function does not automatically start on your computer, type "D:\Drivers\setup.exe." If it does start, proceed to the next screen.



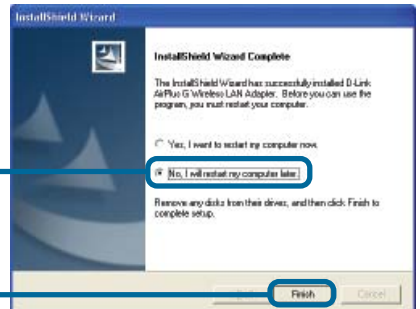
Click **Next**



Click **Next**



Select **No I will restart my computer later**



Click **Finish**

Shut down your computer

2

Installing the DWL-G630 Adapter in Your Computer

Link/Activity LED

Indicates that the DWL-G630 is properly installed when the computer is on and blinks when data is being transmitted

32-bit connector

This is the connector that fits into the cardbus slot of your laptop.



Antenna

Used to wirelessly connect to 802.11g networks.

- A.** Make sure to turn off the laptop computer.
- B.** Locate the cardbus slot on your laptop computer.



- C.** Gently insert the DWL-G630 into the cardbus slot in your laptop computer (as shown.)

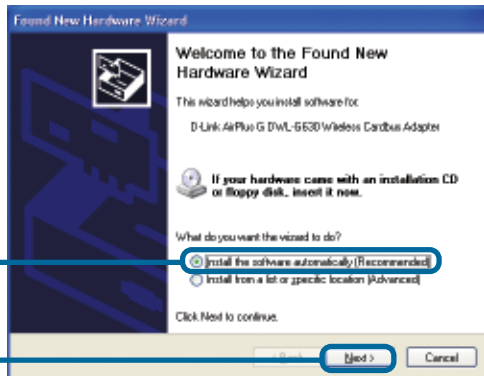
3


Restart Your Computer

When you restart your computer this **Found New Hardware Wizard (Windows XP)** screen may appear:

Select **Install the software automatically (Recommended)**

Click **Next**

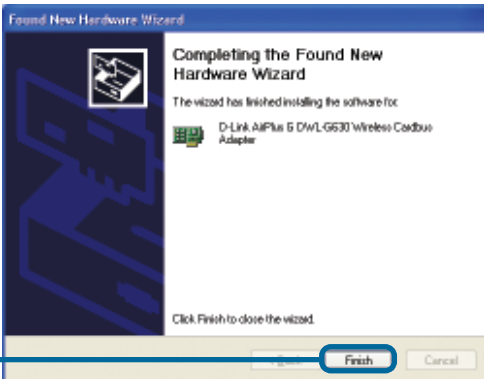


 **For Windows XP:** This **Hardware Installation** alert screen will appear.

Click **Continue Anyway**



Click **Finish** to finalize the installation.



4

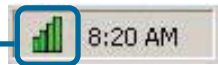
Your Installation is Complete!

After you've continued in Windows XP, 2000, Me, or 98SE, the D-Link AirPlus™ G DWL-G630 **Configuration Utility** will automatically start and the utility icon will appear in the bottom right hand corner of the desktop screen (systray). **If this icon appears GREEN, then you have successfully installed the DWL-G630, are connected to a wireless network and are ready to communicate!**

If the utility icon does not appear, **double-click** the **shortcut icon** that has appeared on your desktop.



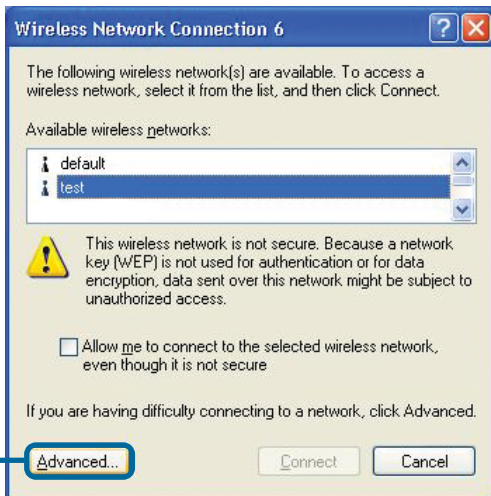
Double-click the **utility icon** to use the configuration utility.



Appendix A - Using the *AirPlus™* G Utility in Windows XP

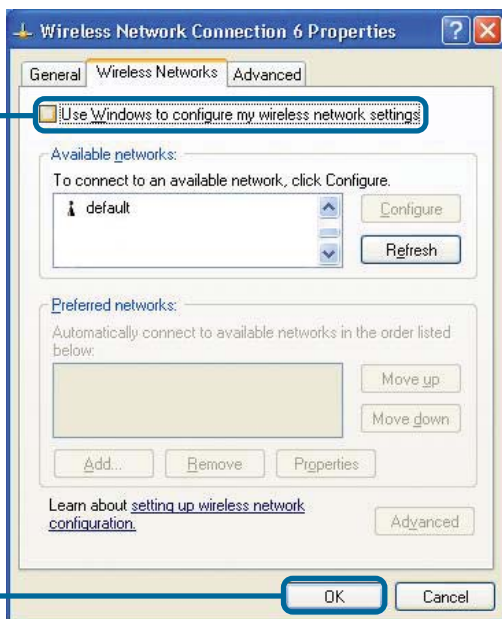
For Windows XP, if you wish to use the *AirPlus™* G utility, please do the following steps.

Click the XP Networking icon to use the Zero Configuration Wireless Settings.



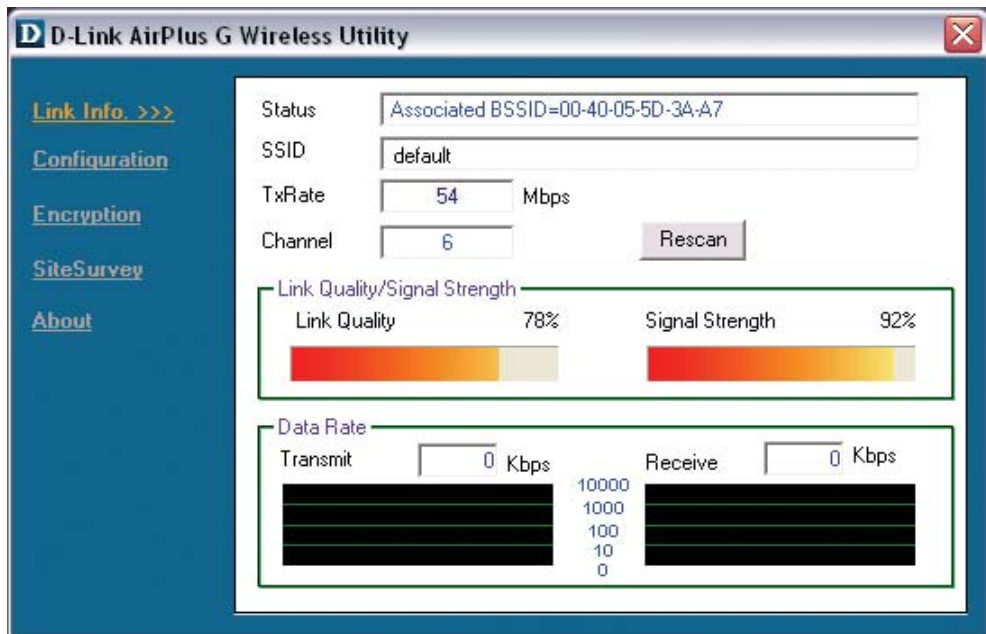
Click Advanced

Uncheck Use Windows to configure my wireless network settings



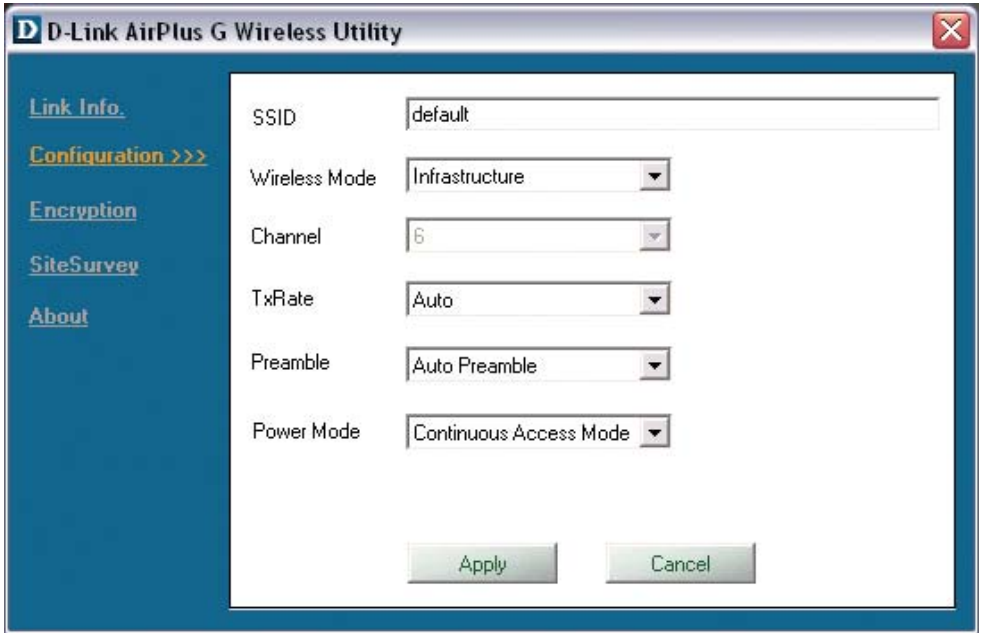
Click OK

Appendix B - Using the AirPlus™ G Utility



- **Status:** Displays the MAC Address of the Access Point that is associated with the DWL-G630.
- **SSID:** The Service Set Identifier is the name assigned to the wireless network. The factory SSID setting is set to **default**.
- **TxRate:** The default setting is **Auto**; meaning, TxRate settings are automatically determined by the DWL-G630 depending on the distance from the access point.
- **Channel:** Displays the channel information. By default, the channel is set to 6 and selection is automatically determined by the DWL-G630.
- **Link Quality / Signal Strength:** Displays the Link Quality for the DWL-G630 wireless connection to the access point. The Signal Strength represents the wireless signal between the access point and the DWL-G630. The percentage coincides with the graphical bar.
- **Data Rate:** Graphically displays the statistics of data transmitted and received.

Appendix B - Using the AirPlus™ G Utility (continued)



- **SSID:** The Service Set Identifier is the name assigned to the wireless network. The factory SSID setting is set to **default**. Make changes here to match the SSID on existing Wireless Router or Access Point.
- **Wireless Mode:** The factory setting is set to **Infrastructure**. Ad-Hoc mode is used for peer-to-peer networking.
- **Channel:** By default, the channel is set to **6**. Channel selection is automatically adjusted by the DWL-G630 depending on the channel setting of the access point selected for association. To change the channel settings, the **Wireless Mode** must be set to **Ad-hoc**.
- **TxRate:** You can adjust the transmission rate to get the best signal possible depending on your usage and your environment.
- **Preamble:** The default setting is set to **“Short & Long Preamble”**. The preamble setting must match the preamble setting of the wireless router or access point in order to connect.
- **Power Mode:** By default, Power Mode is set to Continuous Access Mode.
 - Continuous Access Mode:** This default setting consumes the most power.
 - Maximum Power Save:** This setting consumes the least power.
 - Power Save:** This setting consumes a moderate amount of power.

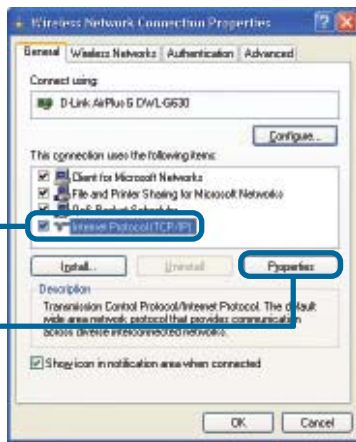
Appendix C - IP Address Configuration

To connect to a network, make sure the proper network settings are configured for DWL-G630.

For Microsoft Windows XP:

Go to **Start > right click on My Network Places > select Properties > Double-click on the Network Connection** associated with the DWL-G630.

Click **Internet Protocol (TCP/IP)**

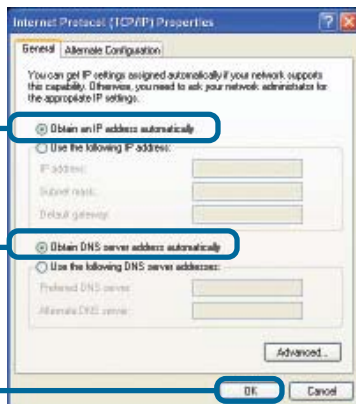


Click **Properties**

Dynamic IP address setup

Used when a **DHCP server** is available on the local network. (i.e. Router)

Select **Obtain an IP address automatically** (if the Wireless Router or Access Point has DHCP server enabled)



Select **Obtain DNS server address automatically**

Click **OK**

Static IP address setup

Used when a **DHCP server** is not available on the local network.

Select **Use the following IP address**



IP address: 192.168.0.52
Subnet mask: 255.255.255.0

Input a static IP address in the same range as the Wireless Router or Access Point.

Click **OK**

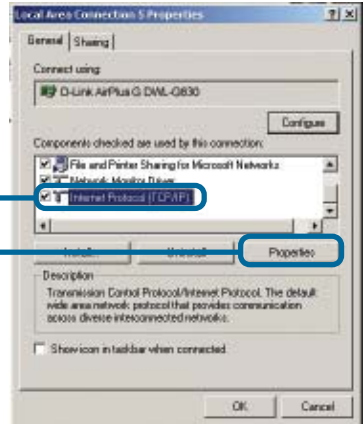
Appendix C - IP Address Configuration

For Windows 2000 users:

Go to **Start > Settings > Network and Dial-up Connections** > Double-click on the **Local Area Connection** associated with the DWL-G630 > select **Properties**

Click **Internet Protocol (TCP/IP)**

Click **Properties**



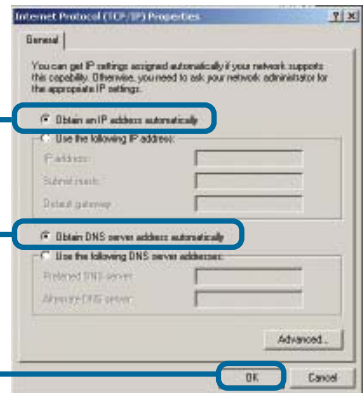
Dynamic IP address setup

Used when a **DHCP server** is available on the local network. (i.e. Router)

Select **Obtain an IP address automatically** (if the Wireless Router or Access Point has DHCP server enabled)

Select **Obtain DNS server address automatically**

Click **OK**



Static IP address setup

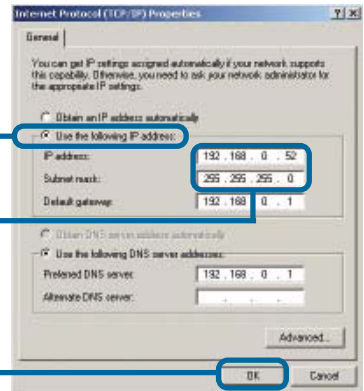
Used when a **DHCP server** is not available on the local network.

Select **Use the following IP address**

IP address: 192.168.0.52
Subnet mask: 255.255.255.0

Input a static IP address in the same range as the Wireless Router or Access Point.

Click **OK**



Notes

Technical Support

You can find software updates and user documentation on the D-Link website.

D-Link provides free technical support for customers within the United States and within Canada for the duration of the warranty period on this product.

U.S. and Canadian customers can contact D-Link technical support through our website, or by phone.

Tech Support for customers within the United States:

D-Link Technical Support over the Telephone:

(877) 453-5465

24 hours a day, seven days a week.

D-Link Technical Support over the Internet:

<http://support.dlink.com>

[email:support@dlink.com](mailto:support@dlink.com)

Tech Support for customers within Canada:

D-Link Technical Support over the Telephone:

(800) 361-5265

Monday to Friday 8:30am to 9:00pm EST

D-Link Technical Support over the Internet:

<http://support.dlink.ca>

[email:support@dlink.ca](mailto:support@dlink.ca)

